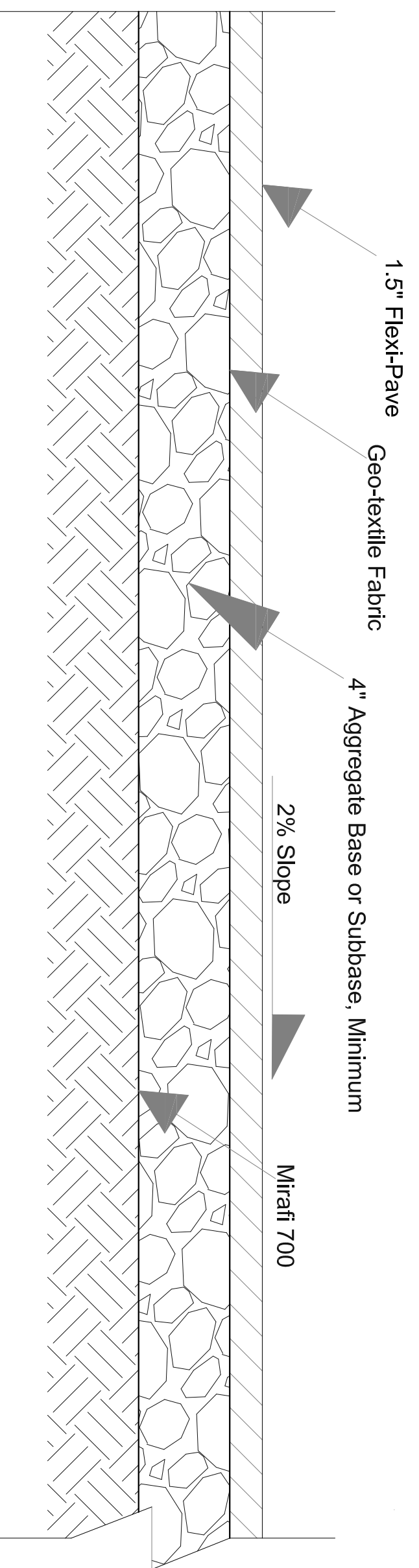
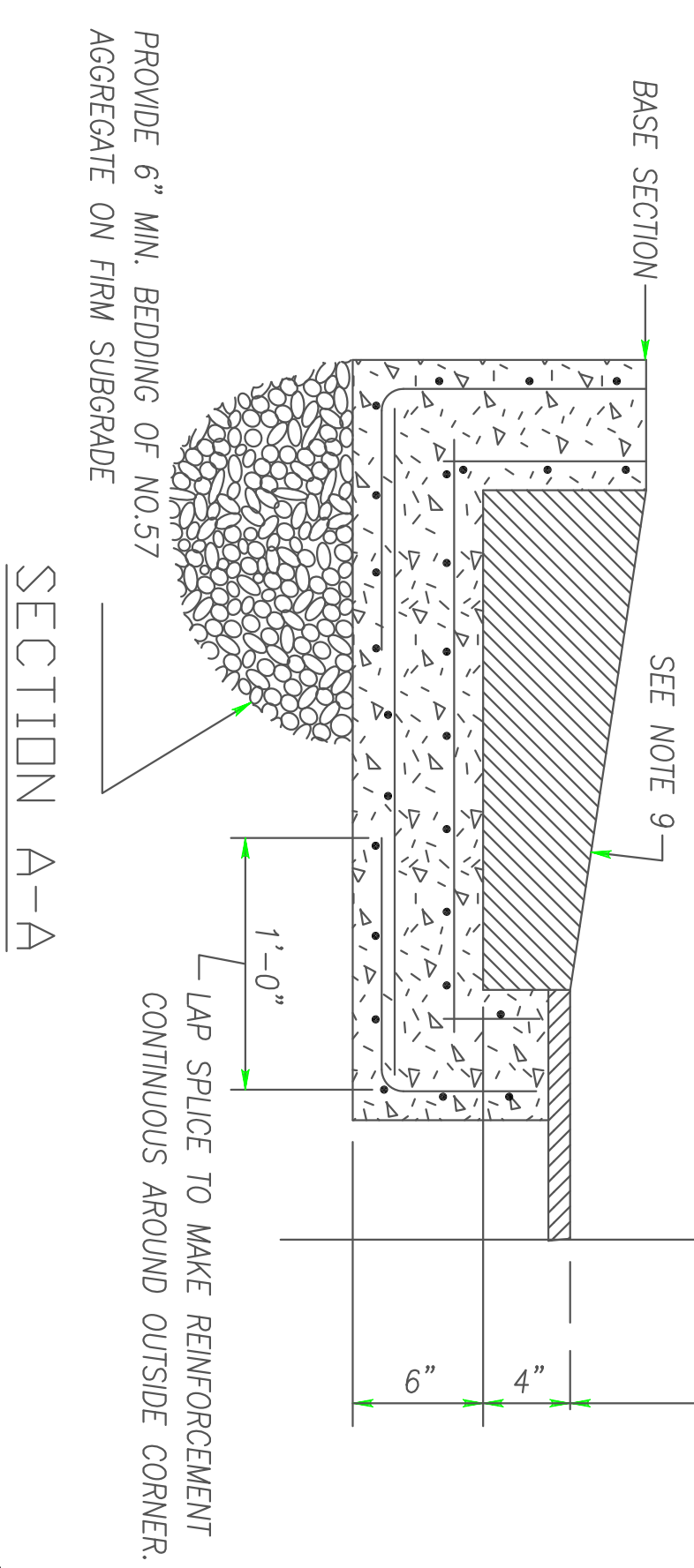
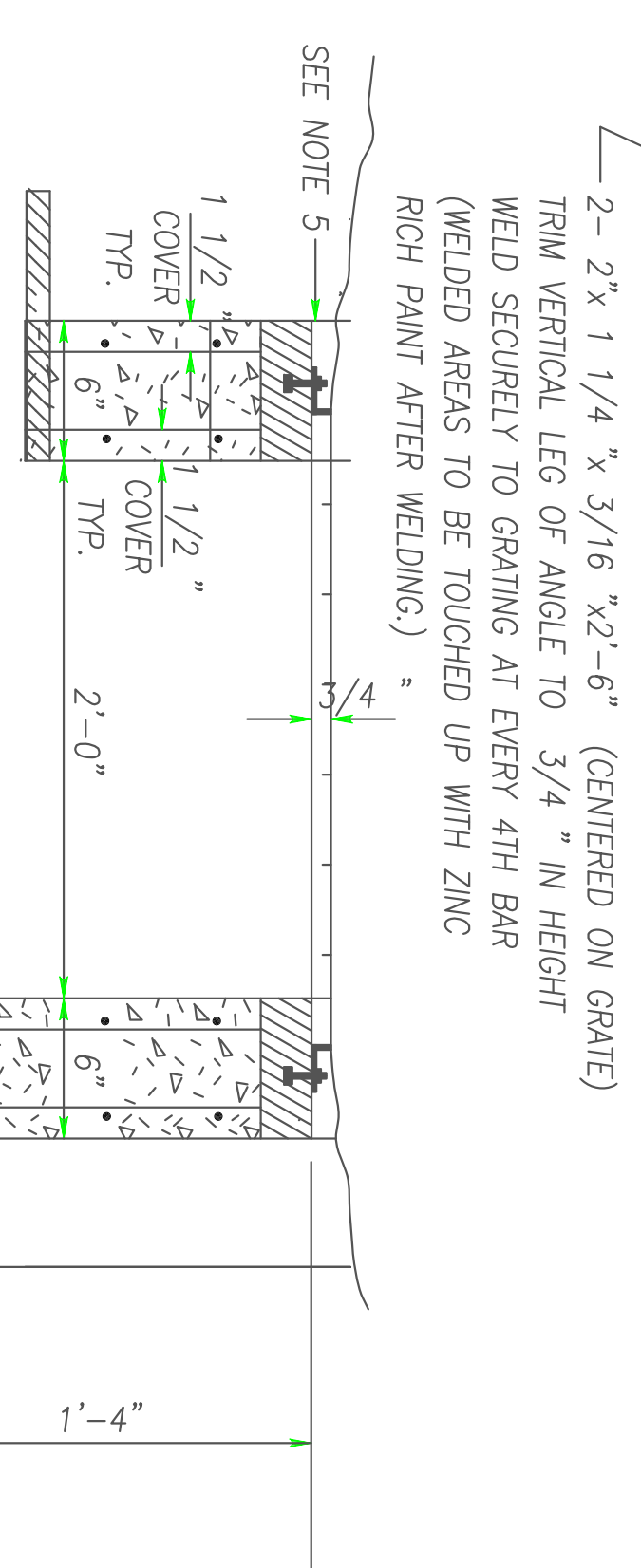
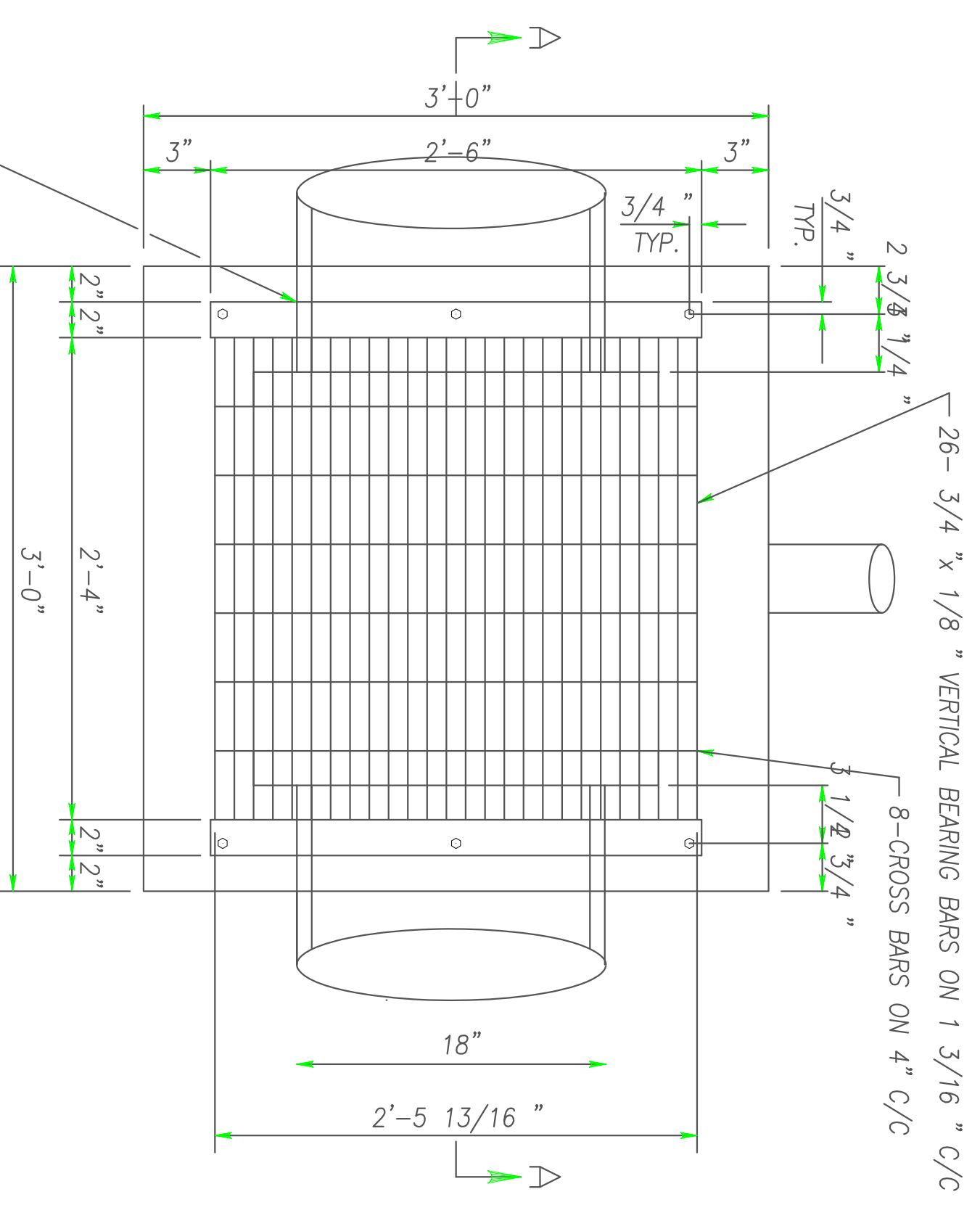
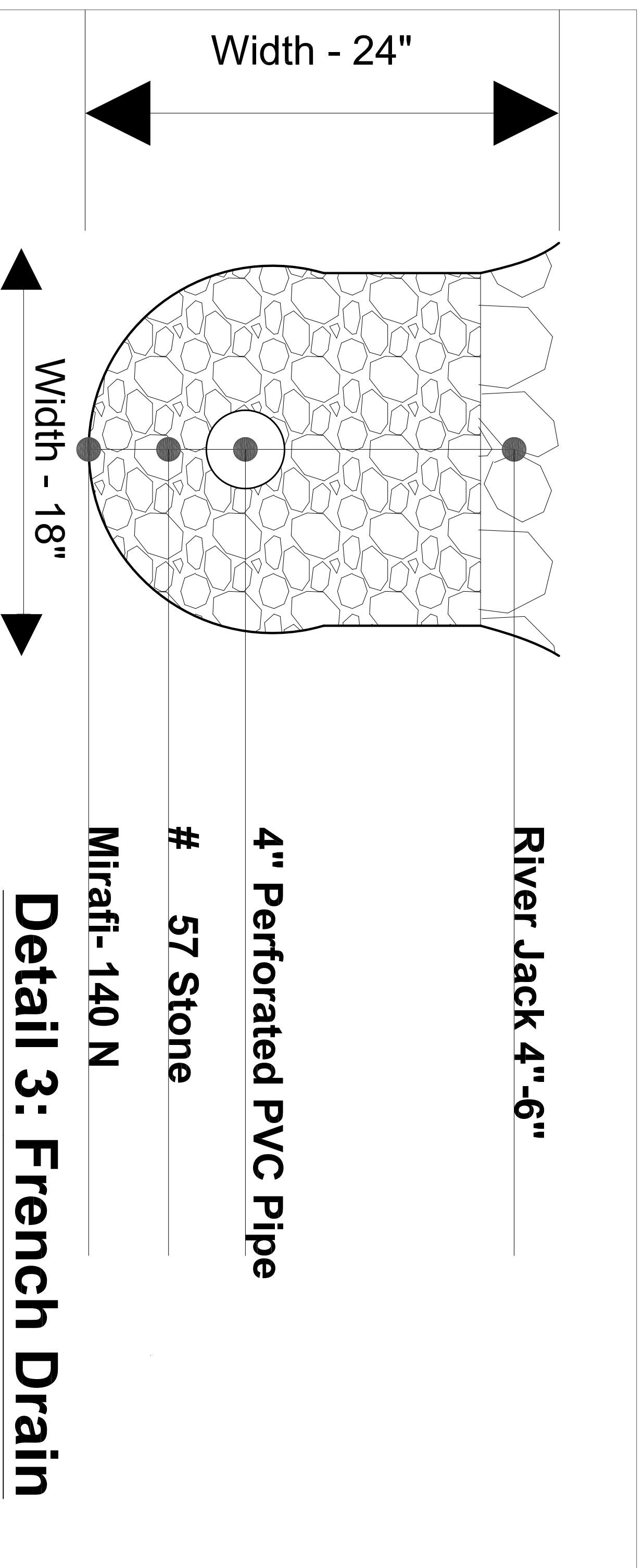


Detail 1: Crushed Granite Surface



Detail 2: Flexi-Pave Surface



PROVIDE 6" MIN. BEDDING OF NO.57 AGGREGATE ON FIRM SUBGRADE

LAP SPICE TO MAKE REINFORCEMENT CONTINUOUS AROUND OUTSIDE CORNER.

- GENERAL NOTES**
1. CONCRETE TO BE MIX NO.6 (4500 PSI).
 2. REINFORCING-2 LAYERS OF 4x4-W4.0x W4.0 WELDED WIRE FABRIC.
 3. THREADED PLASTIC INSERTS TO BE PROVIDED FOR HANDLING.
 4. GRATING SHALL BE STEEL "IRVING X-BAR TYPE AA" OR APPROVED EQUIVALENT. ALL MATERIAL TO BE HOT DIPPED GALV.
 5. GRADE AND SLOPE ADJUSTMENTS TO BE COMPLETED IN THE FIELD USING CONC. MIX NO.6 OR BRICK AND MORTAR. MIN. ONE LAYER OF BRICK OR 3" OF CONCRETE.
 6. PIPE OPENINGS TO BE PROVIDED AS REQUIRED, FOR SIZE, LOCATION AND INVERT ELEVATIONS REFER TO PLANS.
 7. PLACEMENT OF SUBGRADE DRAINAGE WILL BE AS DIRECTED BY THE ENGINEER OR AS NOTED ON THE PLANS.
 8. MINIMUM DEPTH PAYMENT PER "TECH" INLET INCLUDES DEPTHS UP TO 3'-6" MEASURED FROM THE PIPE INVERT TO THE TOP OF THE GRATE. VERTICAL DEPTH PAYMENT PER LINEAR FOOT FOR DEPTHS IN EXCESS OF 3'-6".
 9. INVERT TO BE CONCRETE OR BRICK AND SHALL SLOPE 2" PER FOOT TOWARD OUTLET OR AS DIRECTED BY THE ENGINEER. (INVERT PROVIDED IN THE FIELD)

NOTE EXPANSION ANCHORS MAY BE USED INSTEAD OF BOLTS.

MH Str.1: Detail

DESIGN		Professional Certification. I hereby certify that these documents were prepared or approved by me, and that I am a duly licensed professional engineer under the laws of the State of Maryland.	
City Engineer : Ali Khalilian PE	Dates: 7-22-2016	License No. 18482	Expiration Date 11-6-2017
Project Manager : Nima Upadhyay	Dates: 7-22-2016		
Principal : Daryl Braithwaite	Dates: 7-22-2016		
Design and Drawn by : Nima Upadhyay	Date : 7-22-2016		

City of Takoma Park

Public Works Department
31 Oswego Avenue
Takoma Park, Maryland 20912
(301) 891-7633

TAKOMA PARK DOG PARK

DETAILS

SCALE: Not to Scale

DWG. #

SHT. # 8 of 10