

Takoma Park Water and Sewer Rehabilitation Phase - 2

Project No. BRCRLR5355D12

February 2, 2022

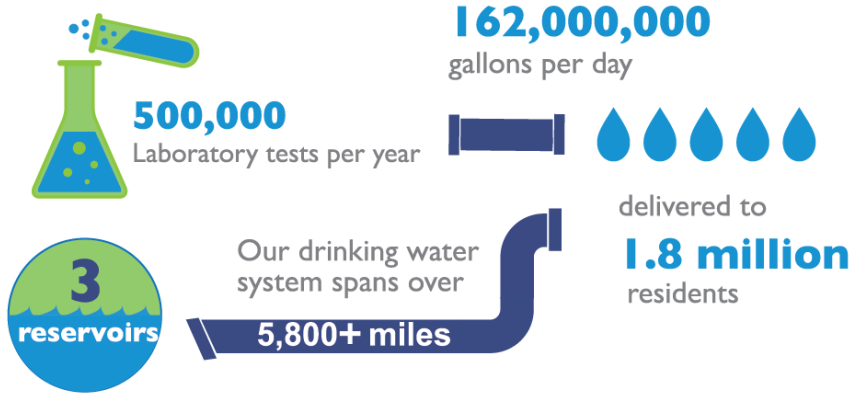
AGENDA

- Introduction to Project Team
- WSSC Water Overview
- Project Overview
- Project Map
- Estimated Construction Schedule
- What to Expect During Construction
- Project Summary
- Questions & Answers

Project Team

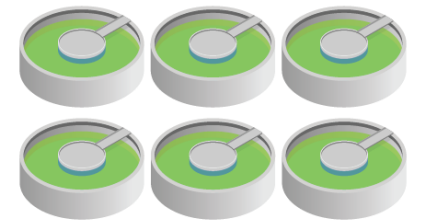
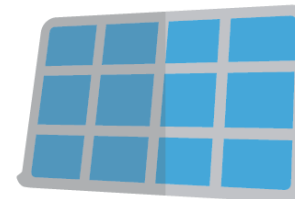
- Bhusan Basnet, Design Project Manager
Phone: 301-206-7946, Email: Bhusan.Basnet@wsscwater.com
- Timothy Brooks, Technical Contracts Supervisor (Construction)
Phone: 443-955-4784, Email: Timothy.Brooks@wsscwater.com
- Brandon Stewart, Customer Advocate
Phone: 301-642-1712, Email: Brandon.Stewart@wsscwater.com
- The Wilson T Ballard Company, Engineering Design Consultants

WSSC Water Overview



Using wind and solar energy to reduce our carbon footprint

WSSC Water has
17,000
solar panels



6 Water Resource Recovery Facilities



Project Overview

- WSSC Water is strategically replacing and rehabilitating our aging water and sewer pipes throughout our service area, a part of our effort to enhance service and reliability to our customers.
- The project includes replacing approximately **0.1 mile** of water mains, **0.03 mile** of sewer mains and service lines.
- The current pipes were installed in the 1920's and 1930's and are nearing the end of their life cycle.
- The new water mains will be zinc-coated, ductile iron pipe wrapped in a protective coating, and the sewer mains will be PVC pipe giving the pipes a life expectancy of at least 100 years.
- Replacing the existing pipes will help reduce disruptions to the community, the environment and emergency services due to water main breaks.

Project Overview

- New water and sewer mains will be installed within the road pavement
- New water house connections (service lines) will be installed from the road pavement to the back of the house for the following properties:
 - Eastern Avenue: 6617, 6621, 6625, 6631, 6633, 6637 and 6701
 - 6702 Westmoreland Avenue
 - 105 1st Avenue
- New water house connections will be installed from the property line (near sidewalk) to the back of the house for the following properties:
 - Westmoreland Avenue: 6704, 6710, 6800, 6802 and 6814
- New sewer house connection will be installed from the road pavement to the property line for:
 - 105 1st Avenue

Project Map

Directly Impacted Streets

Eastern Avenue
1st Avenue
2nd Avenue
Westmoreland
Avenue



LEGEND

Water

PHASE 2

Estimated Construction Schedule

Anticipated Construction Start: March 2022

Estimated Construction Completion: March 2023

**Construction schedules are estimated and weather permitting*

Operational Changes in response to Covid-19

- WSSC Water has implemented protocols that align with recommendations from local, state, and federal public health authorities.
- Working to minimize impact
 - Facial masks and physical distancing
- All WSSC Water employees and contractors are required to refrain from coming to work if displaying symptoms of COVID-19.
 - We have implemented robust internal contact tracing and quarantine requirements.
- Earlier notification to customers
 - Contact via handouts



What to Expect During Construction

- Anticipated Work Hours: Monday-Friday, 9:00 a.m. – 3:30 p.m.
 - Work may occasionally extend beyond these hours to complete specific tasks.
 - Nightwork as needed, for multi-lane closure and service shutdown.
- Construction activities may include:
 - Field reviews and inspections
 - Survey crews
 - Test pits
 - Construction crews and heavy machinery
- Reliable water and sewer service will be maintained during construction
 - Short water shutdowns of up to 8 hours may be required
 - Advanced notification (48-72 hours) of these shutdowns will be provided



What to Expect During Construction

- Open-cut construction method, which involves cutting and excavating a section of the pavement.
- This construction method does create noise and dust.



Traffic Impacts

- Certain construction activities may require temporary changes to traffic patterns
 - Traffic will be managed to minimize community disruptions
- Access will be maintained to homes during construction
 - Access into homes is **NOT** required
 - Access onto private property, outside approved easement area, is generally **NOT** required
- Parking restrictions
 - WSSC Water will provide 48-hour advance (denoted by “No Parking” signs) notice
 - Any vehicles that have not been removed from the designated area will be towed to a nearby street at no cost to the owner.
- Final restoration of sidewalks, roadways and landscaping will take place within 90 days of construction completion.



Signage and Restoration

- Construction signs with contact persons will be placed throughout the project area
- Projects completed during the winter months will be permanently paved and restored to their original state or better in the following spring.



Project Summary

- The existing water and sewer mains are near the end of their useful lives.
- WSSC Water will be installing new water and sewer mains in the roadways, water house connection up to the back of the properties and a sewer house connection up to the property line.
- WSSC Water will minimize service disruptions during construction.
- WSSC Water will coordinate work activities with property owners in the project area.
- WSSC Water will restore all areas impacted by construction activities at the end of the project.
- WSSC Water's goal is to provide a reliable water system to customers.

THANK YOU! QUESTIONS?

